

**SMALL BLOCK CHEVROLET
SWEDGED END PUSHRODS**

.080" WALL 1010 STEEL



- ✓ Heat treated and black oxide finish
- ✓ For use in hydraulic lifter applications with less than 400 lbs. open spring pressure and under 7500 rpm

Part No.	Quantity	Description	Diameter	Length
25785-16	16 pcs.	SB Chevy - Stock Length	5/16"	7.794"
25786-16	16 pcs.	SB Chevy - .100" Longer	5/16"	7.894"
25717-16	16 pcs.	Late model 350 - Stock Length	5/16"	7.170"
25719-16	16 pcs.	Late model 350 - .050" Longer	5/16"	7.220"

25717 and 25719 are for late model OEM hydraulic roller lifters. Hardened guide plates 42355 are required with aluminum heads.

**SMALL BLOCK CHEVROLET
BALL END PUSHRODS**

.080" WALL 1010 STEEL



- ✓ Excellent pushrods for mildly modified engines with open spring pressure under 300 lbs

Part No.	Quantity	Description	Diameter	Length
25737-16	16 pcs.	SB Chevy - Stock Length	5/16"	7.794"
25777-16	16 pcs.	SB Chevy - .100" Longer	5/16"	7.894"
25790-16	16 pcs.	SB Chevy - .150" Longer	5/16"	7.944"

**FORD 5.0L
SWEDGED END PUSHRODS**

.080" WALL 1010 STEEL & 4130 CHROME MOLY



- ✓ Stock length pushrod for use with stock Ford valve (5.080" O/A)
- ✓ Use of Chevy valves (O/A 4.911") in Ford heads requires .172" shorter pushrods

Part No.	Quantity	Description	Material	Diameter	Length
25723-16	16 pcs.	Stock Length	1010	5/16"	6.272"
25725-16	16 pcs.	.172" Shorter	1010	5/16"	6.100"
25627-16	16 pcs.	Stock Length	4130	5/16"	6.272"
25610-16	16 pcs.	.172" Shorter	4130	5/16"	6.100"

PUSHRODS, DRIVE & OIL PUMPS

PUSHRODS

4130 CHROME MOLY SWEDGED END PUSHRODS

- ✓ Meticulously formed ends with exact radii
- ✓ Excellent concentricity, closely controlled length
- ✓ Heat treated and black oxide finished
- ✓ Private label stenciling available



5/16" .080" WALL



5/16" .120" WALL

PUSHRODS, DRIVE & OIL PUMPS

Length	5/16" Dia. .080" Wall Part No.	5/16" Dia. .120" Wall Part No.	3/8" Dia. .080" Wall Part No.	3/8" Dia. .120" Wall Part No.	7/16" Dia. .165" Wall Part No.
6.050	25605-16				
6.100	25610-16				
6.150	25615-16				
6.200	25620-16				
6.250	25625-16				
6.272	25627-16				
6.300	25630-16			25305-8	
6.350	25635-16			25306-8	
6.400	25640-16			25307-8	
6.450	25645-16			25308-8	
6.500	25650-16		25843-8	25309-8	
6.550	25655-16		25844-8		
6.600	25660-16		25846-8		
6.650	25665-16		25837-8		
6.700	25670-16		25838-8		
6.750	25675-16		25839-8		
6.800	25680-16		25817-8		
6.850	25685-16		25819-8	25316-8	
6.900	25690-16		25853-8	25317-8	
6.950	25695-16		25857-8	25318-8	
7.000	25700-16		25862-8	25319-8	
7.050	25727-16		25827-8		
7.100	25729-16		25829-8		
7.150	25741-16		25841-8		
7.200	25733-16		25872-8		
7.250	25734-16		25873-8		
7.300	25730-16		25874-8		
7.350	25751-16		25851-8		
7.375	25732-16				
7.400	25735-16		25822-8		
7.450	25736-16		25836-8		
7.500	25754-16		25854-8		
7.550	25755-16		25818-8		
7.600	25767-16		25876-8	25331-8	25174-8
7.625			25824-8		
7.650	25768-16		25877-8	25332-8	25129-8
7.675			25834-8		
7.700	25772-16	25233-16	25828-8	25333-8	25130-8
7.725			25831-8		
7.750	25707-16	25234-16	25832-8	25334-8	25131-8
7.775			25833-8		
7.800	25709-16	25235-16	25787-8	25335-8	25132-8
7.825	25781-16		25808-8		
7.850	25711-16	25236-16	25878-8	25336-8	25133-8
7.875			25879-8		
7.900	25712-16	25237-16	25788-8	25337-8	25134-8
7.925			25813-8		
7.950	25715-16	25238-16	25814-8	25338-8	25135-8
7.975			25809-8		
8.000	25716-16	25239-16	25816-8	25339-8	25136-8
8.025			25802-8		
8.050	25721-16	25240-16	25821-8	25340-8	25137-8
8.075			25807-8		
8.100	25722-16	25241-16	25810-8	25341-8	25138-8
8.125			25811-8		
8.150	25744-16	25242-16	25815-8	25342-8	25139-8

Length	5/16" Dia. .080" Wall Part No.	5/16" Dia. .120" Wall Part No.	3/8" Dia. .080" Wall Part No.	3/8" Dia. .120" Wall Part No.	7/16" Dia. .165" Wall Part No.
8.175			25812-8		
8.200	25745-16		25820-8	25343-8	25140-8
8.225			25823-8		
8.250	25701-16		25825-8	25344-8	25141-8
8.275	25753-16				
8.280			25795-8		25142-8
8.300	25702-16		25830-8	25345-8	25143-8
8.325	25762-16		25826-8		
8.350	25703-16		25835-8	25346-8	25144-8
8.375	25763-16				
8.380			25769-8		
8.400	25706-16		25840-8	25347-8	25145-8
8.425	25764-16		25842-8		
8.450	25708-16		25845-8	25348-8	25146-8
8.475			25847-8		
8.500	25774-16		25850-8	25349-8	25147-8
8.525			25856-8		
8.550	25710-16		25855-8	25350-8	25148-8
8.575			25858-8		
8.600	25718-16		25860-8	25351-8	25149-8
8.625			25863-8		
8.650	25724-16		25865-8	25352-8	25150-8
8.680			25797-8		25151-8
8.700	25799-16		25870-8	25353-8	25152-8
8.725			25867-8		
8.750	25738-16		25875-8	25354-8	25153-8
8.775			25868-8		
8.800	25742-16		25880-8	25355-8	25154-8
8.825			25882-8		
8.850	25746-16		25885-8	25356-8	25155-8
8.875			25887-8		
8.900	25758-16		25890-8	25357-8	25156-8
8.925			25892-8		
8.950	25757-16		25895-8	25358-8	25157-8
8.975			25897-8		
9.000	25765-16		25900-8	25359-8	25158-8
9.025			25926-8		
9.050	25766-16		25905-8	25360-8	25159-8
9.075			25927-8		
9.100	25776-16		25910-8	25361-8	25160-8
9.125			25928-8		
9.150	25791-16		25915-8	25362-8	25161-8
9.175			25929-8		
9.200	25792-16		25920-8	25363-8	25162-8
9.250	25800-16		25796-8	25364-8	25163-8
9.300	25801-16		25930-8	25365-8	25164-8
9.350	25803-16		25770-8	25366-8	25165-8
9.400	25804-16		25940-8	25367-8	25166-8
9.450	25805-16		25945-8	25368-8	25167-8
9.500	25806-16		25950-8	25369-8	25168-8
9.550	25848-16		25955-8	25370-8	25169-8
9.600	25849-16		25960-8	25371-8	25170-8
9.650			25798-8	25372-8	25171-8
9.700	25859-16		25970-8	25373-8	25172-8
9.750			25975-8	25374-8	25173-8
9.800	25864-16		25980-8	25375-8	25175-8

Note: New part numbers are *ITALICIZED*.

PUSHRODS

4130 CHROME MOLY SWEDGED END PUSHRODS

- ✓ Meticulously formed ends with exact radii
- ✓ Excellent concentricity, closely controlled length
- ✓ Heat treated and black oxide finished
- ✓ Private label stenciling available



Length	5/16" Dia. .080" Wall Part No.	5/16" Dia. .120" Wall Part No.	3/8" Dia. .080" Wall Part No.	3/8" Dia. .120" Wall Part No.	7/16" Dia. .165" Wall Part No.
9.850			25985-8	25376-8	25176-8
9.900	25869-16		25990-8	25377-8	25177-8
9.950			25995-8	25378-8	25178-8
10.000			25906-8	25379-8	25179-8
10.050			25907-8		25100-8
10.075					25101-8
10.100		25901-8			25102-8
10.125					25103-8
10.150			25908-8		25104-8
10.200			25909-8		25123-8
10.250			25911-8		25124-8
10.300			25912-8		25105-8
10.325					25106-8
10.350			25913-8		25125-8
10.400			25902-8		25126-8
10.450			25914-8		25107-8
10.475					25108-8
10.500			25903-8		25109-8
10.525					25110-8
10.550		25916-8			25111-8
10.575					25112-8
10.600			25917-8		25113-8
10.625					25114-8
10.650			25918-8		25119-8
10.700			25919-8		25120-8
10.750			25921-8		25121-8
10.800			25922-8		25127-8
10.850			25923-8		25115-8
10.875					25116-8
10.900			25924-8		25117-8
10.925					25118-8
10.950			25925-8		25122-8
11.000			25904-8		25128-8
11.050					25180-8
11.100					25181-8
11.150					25182-8
11.200					25183-8
11.250					25184-8
11.300					25185-8
11.350					25186-8
11.400					25187-8
11.450					25188-8
11.500					25189-8
11.550					25190-8
11.600					25191-8
11.650					25192-8
11.700					25193-8
11.750					25194-8
11.800					25195-8
11.850					25196-8
11.900					25197-8
11.950					25198-8
12.000					25199-8
12.050					25200-8
12.100					25201-8
12.150					25202-8

COMMON 5/16" PUSHROD LENGTH APPLICATIONS

Part No.	Description	Length
SMALL BLOCK CHEVY		
25709-16	265-350 Stock	7.800"
25711-16	.050" Longer	7.850"
25712-16	.100" Longer	7.900"
25733-16	Late Model 350	7.200"
25735-16	LS-1 Stock	7.400"
CHRYSLER / DODGE 5.7L HEMI		
26570	HEMI 5.7L Includes 8 Intakes and 8 Exhausts	Stock Length Int. 6.600" Exh. 7.825"
CHRYSLER / DODGE SRT-8 6.1L HEMI		
26610	SRT-8 HEMI 6.1L Includes 8 Intakes and 8 Exhausts	Stock Length Int. 6.650" Exh. 7.850"
SMALL BLOCK FORD		
25627-16	Stock 5.0 L	6.272"
25744-16	Stock 351 W	8.150"
25706-16	Stock 351 C	8.400"
25710-16	Yates +.150"	8.550"

COMMON 3/8" PUSHROD LENGTH APPLICATIONS

Part No.	Description	Length
25787-8*	SB Chevy - Stock Length & Stock LS-7	7.800"
25788-8*	SB Chevy - .100" Longer	7.900"
25795-8	BB Chevy - Stock Intake	8.280"
25796-8	BB Chevy - Stock Exhaust	9.250"
25797-8	BB Chevy - .400" Longer Int.	8.680"
25798-8	BB Chevy - .400" Longer Exh.	9.650"
25815-8*	351 W Ford - Stock Length	8.150"
25840-8*	351 C Ford - Stock Length	8.400"
25855-8*	Yates +.150" Longer	8.550"

* You must order 2 sets of 8 pieces for a complete engine.

Note: New part numbers are **ITALICIZED**.

PUSHRODS

4130 CHROME MOLY 7/16", 1/2" & 9/16" THREE PIECE PUSHRODS

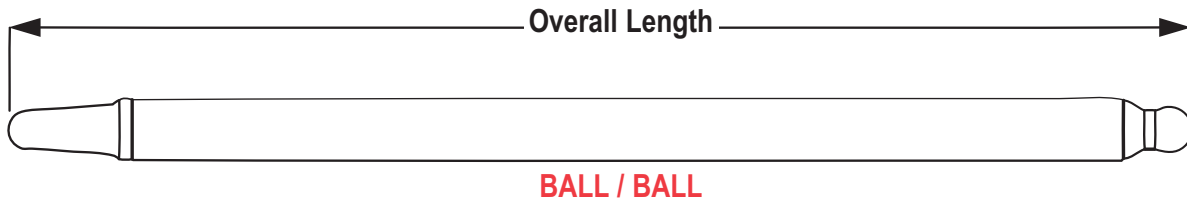


CUSTOM ORDER PUSHRODS

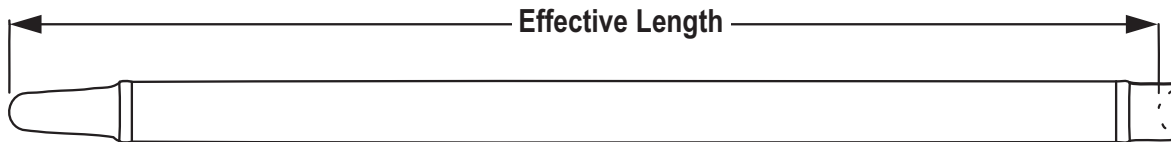
Manley's custom order pushrods are manufactured from seamless 4130/4135 aircraft-grade tubing, which is heat treated for optimum strength and stiffness. Most pushrod tips are available in 4130 Chrome Moly with our "Extreme Duty" tips manufactured from H-13 Tool Steel.

When determining the correct pushrod length, Manley Performance requires that you follow these guidelines.

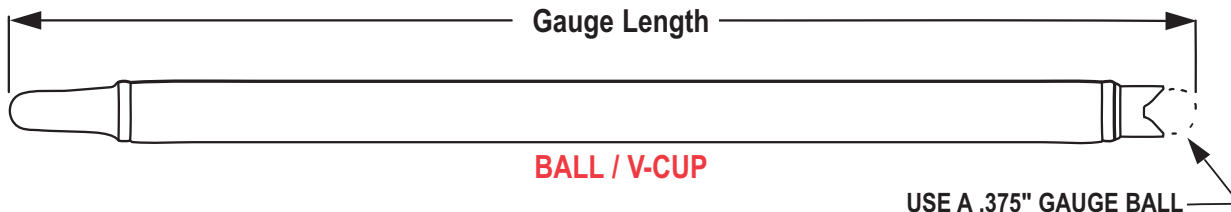
- **BALL / BALL** design are to be ordered by referring to the **overall length** measurement.
- **BALL / RADIUS CUP** design are properly ordered by the "**effective**" length. The "effective" length is measured from the bottom of the cup to the top of the ball.
- **BALL / V-CUP** design requires the use of a 3/8" diameter gauge ball to determine "**gauge**" length. Place the 3/8" diameter ball in the V and then measure and report the gauge length.



BALL / BALL



BALL / RADIUS CUP



BALL / V-CUP

USE A .375" GAUGE BALL

For ease of determining your precise pushrod length, Manley offers P/N 40125 which is a reusable, adjustable pushrod measuring kit. This kit contains a 7/16" diameter adjustable pushrod, a complete assortment of every tip configuration, checking springs and detailed instructions which allow an engine builder to determine the exact pushrod length within an 8.000" to 14.000" range.

NOTE: Custom 7/16" diameter pushrods ARE guide plate compatible. Custom 1/2" and 9/16" diameter pushrods ARE NOT guide plate compatible.

CUSTOM ORDER PUSHRODS

The ordering process is as simple as 1 - 2 - 3!

1. Choose the diameter that you require.
2. Choose the appropriate rocker and lifter ends, (specify 4130 or "Extreme Duty" H-13 material if both are offered).
3. Determine the "length" (up to a 14" maximum finished length) based on the guidelines on page 86.

For each finished pushrod you will be billed for:

1pc. - Tubing Section

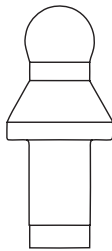
(Note: this includes the cost of machining to the final size and tip installation)

1pc. - Rocker Arm End

1pc. - Lifter End

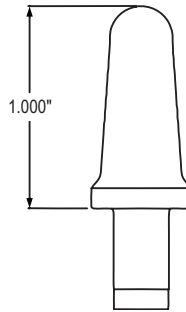
**4130/4135 CHROME MOLY
SEAMLESS TUBING**

Part No.	Diameter	Wall Thickness
25437-1	7/16"	.165"
25500-1	1/2"	.188"
25563-1	9/16"	.188"



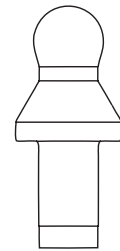
5/16" BALL SHORT

Tip Material	Pushrod Tip Part Number
4130	24100-1
H-13	24101-1



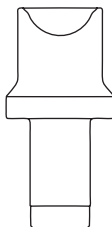
5/16" BALL LONG

Tip Material	Pushrod Tip Part Number
4130	24102-1
H-13	24103-1



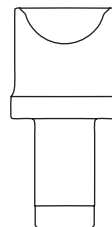
3/8" BALL

Tip Material	Pushrod Tip Part Number
4130	24104-1
H-13	24105-1



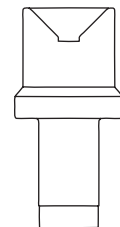
5/16" CUP

Tip Material	Pushrod Tip Part Number
4130	24106-1
H-13	24107-1



3/8" CUP

Tip Material	Pushrod Tip Part Number
4130	24108-1
H-13	24109-1



V-CUP

Tip Material	Pushrod Tip Part Number
4130	24110-1*
H-13	24111-1

* Supplied with a bronze insert.

Our goal is to ship your custom pushrod order in 3-5 working days. In the event you need them quicker, specify surcharge P/N 04001 which guarantees shipping in 2 working days.

PUSHRODS

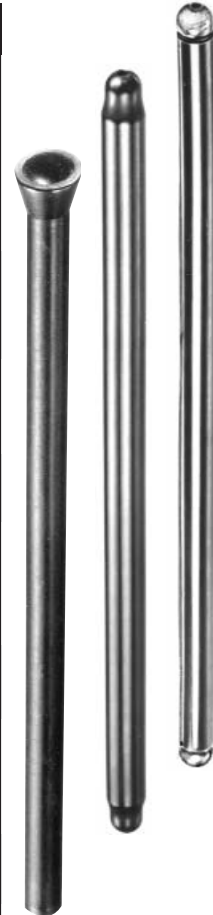
CHRYSLER - FORD - PONTIAC - HOLDEN

PUSHRODS

- ✓ Cup and tip pushrods and ball end pushrods manufactured of 1010 steel
- ✓ Swedged end pushrods manufactured of 4130 chrome moly
- ✓ All pushrods are heat treated and black oxide finished



Part No.	Quantity	Description	Type	Diam.	Length
CHRYSLER ENGINES					
26570	16 pcs.	HEMI 5.7 L Includes 8 Intakes and 8 Exhausts	Swedged	5/16"	Stock Int. 6.600" Exh. 7.825"
26610	16 pcs.	SRT-8 HEMI 6.1 L Includes 8 Intakes and 8 Exhausts	Swedged	5/16"	Stock Int. 6.650" Exh. 7.850"
25743-16	16 pcs.	440 Chrysler w/ adjustable rockers and solid lifters	Cup & Tip	3/8"	9.295"
25756-16	16 pcs.	440 Chrysler w/ adjustable rockers and hydraulic lifters	Cup & Tip	3/8"	8.995"
FORD ENGINES					
25704-16	16 pcs.	260-289-302 Ford	Ball End	5/16"	6.776"
25728-16	16 pcs.	302 Boss Ford converted to use 42156 guide plates	Swedged	3/8"	7.700"
25748-16	16 pcs.	302W Ford - all engines after 10-21-68	Ball End	5/16"	6.886"
25705-16	16 pcs.	332-428 Ford with adjustable rocker arms	Cup & Tip	11/32"	9.157"
25747-16	16 pcs.	351W Ford	Ball End	5/16"	8.150"
25744-16	16 pcs.	351W Ford	Swedged	5/16"	8.150"
25750-16	16 pcs.	351C Ford - not Boss	Ball End	5/16"	8.408"
25752-16	16 pcs.	351C Ford - not Boss	Swedged	3/8"	8.408"
25779-16	16 pcs.	351M-400 Ford	Swedged	3/8"	9.500"
25789-16	16 pcs.	429-460 Ford	Ball End	5/16"	8.550"
25782-16	16 pcs.	429-460 Ford	Swedged	3/8"	8.550"
PONTIAC ENGINES					
25726-16	16 pcs.	400-428-455 Pontiac	Ball End	5/16"	9.130"
HOLDEN ENGINES					
25773-16	16 pcs.	Holden V-8	Ball End	5/16"	8.670"



PUSHRODS, DRIVE & OIL PUMPS

CAMSHAFT SPACERS & MORE

ROLLER THRUST BUTTONS

- ✓ Prevents camshaft from walking forward in the block
- ✓ Some Small Block Chevys require the center hole in the cam sprocket to be enlarged to .875" diameter



Part No.	Quantity	Description
42111	1	Small Block Chevrolet w/ early (up to 1978) timing cover. Length .850"
42113	1	Small Block Chevrolet w/ late "short style" (1979/up) timing cover. Length .690"
42145	1	Big Block Chevrolet. Length .950"

ALUMINUM CAMSHAFT SPACERS

- ✓ An excellent economical answer to the problem of camshaft "walk"
- ✓ Some Small Block Chevys require the center hole in the cam sprocket to be enlarged to .875" diameter



Part No.	Quantity	Description
42146	1	Small Block Chevrolet w/ early (up to 1978) timing cover. Length .830"
42144	1	Small Block Chevrolet w/ late "short style" (1979/up) timing cover. Length .690"
42116	1	Big Block Chevrolet. Length .950"

BALANCER REPAIR SLEEVE

- ✓ An inexpensive way to repair worn stock Chevrolet balancers
- ✓ Protects new, precious aluminum crankshaft hubs



Part No.	Quantity	Description
42226	1	All Small Block Chevrolets

CAMSHAFT LOCK PLATE

- ✓ Positively secures sprocket bolts in place
- ✓ Bendable tabs. Grade 8 camshaft bolts

Part No.	Quantity	Description
42114	1 kit	SB and BB Chevrolet



TIMING CHAIN KITS

SMALL BLOCK & BIG BLOCK CHEVROLET BILLET STEEL SPROCKETS & DOUBLE ROLLER CHAIN

- ✓ Fully machined billet steel camshaft and crankshaft sprockets
- ✓ Roller chain designed with .250" diameter rollers
- ✓ Crank sprocket includes three keyways
- ✓ Camshaft sprockets are machined for and include a brass wear shim or a Torrington thrust bearing



Part No.	Description	Center-to-Center	Chain	Shim/Torrington
73111	SB Chevy w/ Brass Shim	Stock	76161	42140
73121	SB Chevy w/ Captive Torrington	Stock	76161	42420
73311	SB Chevy w/ Brass Shim	.005" Shorter	76161	42140
73321	SB Chevy w/ Captive Torrington	.005" Shorter	76161	42420
73201	SB Chevy w/ BB Chevy Snout & Brass Shim	Stock	76161	42140
73221	SB Chevy w/ BB Chevy Snout & Captive Torrington	Stock	76161	42420
73211	SB Chevy w/ BB Chevy Snout & Brass Shim	.005" Shorter	76161	42140
73231	SB Chevy w/ BB Chevy Snout & Captive Torrington	.005" Shorter	76161	42420
73242	BB Chevy w/ Captive Torrington and Cam Lock Plate w/ Roller Thrust Button	Stock	76162	42420

SMALL BLOCK CHEVROLET LS-1/LS-6 (1997-2004), LS2 & LS-3 BILLET STEEL SPROCKETS & DOUBLE ROLLER CHAIN

- ✓ Fully machined billet steel camshaft and crankshaft sprockets
- ✓ Roller chain designed with .250" diameter rollers
- ✓ Nine keyway crankshaft sprocket
- ✓ Camshaft sprockets are machined for and include a Torrington thrust bearing



Part No.	Description	Center-to-Center	Chain	Torrington
73233	SB Chevy LS-1/LS-6 w/ Captive Torrington and 9 Keyway Crankshaft Sprocket	Stock	76233	42419
73234	SB Chevy LS-2 w/ Captive Torrington and 9 Keyway Crankshaft Sprocket	Stock	76233	42419
73235	SB Chevy LS-3 Single Bolt Cam w/ Captive Torrington and 9 Keyway Crankshaft Sprocket	Stock	76233	42419
73236	SB Chevy LS-3 Three Bolt Cam w/ Captive Torrington and 9 Keyway Crankshaft Sprocket	Stock	76233	42419
73333	SB Chevy LS-1/LS-6 w/ Captive Torrington and 9 Keyway Crankshaft Sprocket	.005" Shorter	76233	42419
73334	SB Chevy LS-2 w/ Captive Torrington and 9 Keyway Crankshaft Sprocket	.005" Shorter	76233	42419

CHRYSLER/DODGE HEMI 5.7L/6.1L BILLET STEEL SPROCKETS & DOUBLE ROLLER CHAIN

- ✓ Fully machined billet steel camshaft & crankshaft sprockets
- ✓ Roller chain designed with .250" diameter rollers
- ✓ Available with or without a Torrington thrust bearing
- ✓ Nine keyway crankshaft sprocket

Part numbers 73205 and 73206 are compatible with the following engines: Chrysler 5.7L 2004-10, Chrysler 6.1L 2006-10, Dodge 5.7L 2005-10, Dodge 6.1L 2006-10, and Dodge Truck 5.7L 2003-10.



Part No.	Description	Center-to-Center	Chain	Torrington
73205	Chrysler/Dodge Hemi 5.7L/6.1L w/ 9 Keyway Crankshaft Sprocket	Stock	76205	-----
73206	Chrysler/Dodge Hemi 5.7L/6.1L w/ Captive Torrington and 9 Keyway Crankshaft Sprocket	Stock	76205	42419

Note: New part numbers are *ITALICIZED*.

TIMING CHAIN KITS

CAST CAM SPROCKET KITS WITH TORRINGTON BEARINGS, ROLLER THRUST BUTTONS & LOCKS

- ✓ Fully machined steel crankshaft sprocket with three keyways
- ✓ Cast camshaft sprocket machined for Torrington thrust bearing
- ✓ Roller chain designed with .250" diameter rollers
- ✓ Kit includes captive Torrington bearing, roller thrust button, and Manley camshaft lock



Part No.	Description	Center-to-Center	Chain	Torrington Bearing	Thrust Button	Cam Lock
73141	SB Chevy '55-'78	Stock	76161	42420	42111	42114
73151	SB Chevy '79/up	Stock	76161	42420	42113	42114
73142	BB Chevy	Stock	76162	42420	42145	42114

RACE ROLLER TIMING KITS WITH TORRINGTON BEARINGS & CAST CAM SPROCKET

- ✓ Same kits as 73141, 73151 and 73142 except they do not include the roller thrust button and cam lock
- ✓ Kits are available standard and .005" short

Part No.	Description	Center -to -Center	Chain	Torrington Bearing
73181	SB Chevrolet	Stock	76161	42420
73191	SB Chevrolet	.005" Shorter	76161	42420
73182	BB Chevrolet	Stock	76162	42420
73192	BB Chevrolet	.005" Shorter	76162	42420



RACE ROLLER TIMING KITS WITH BRASS WEAR SHIMS & CAST CAM SPROCKET

- ✓ Fully machined steel crankshaft sprocket with three keyways
- ✓ Cast camshaft sprocket machined for brass wear shim
- ✓ Roller chain designed with .250" diameter rollers
- ✓ Chevrolet kits include wear shim

Part No.	Description	Center -to -Center	Chain	Brass Block Wear Shim
73161	SB Chevrolet	Stock	76161	42140
73171	SB Chevrolet	.005" Shorter	76161	42140
73162	BB Chevrolet	Stock	76162	42140
73172	BB Chevrolet	.005" Shorter	76162	42140
73174	Ford 255-302-351W (Late 1973-88)	Stock	76174	None
73146	Ford 429-460	Stock	76146	None



STREET MASTER ROLLER CHAIN KITS

- ✓ Standard style roller chains
- ✓ Three keyway steel crankshaft sprocket and cast cam sprocket
- ✓ Excellent value kit for mild performance engines

Part No.	Description	Center -to -Center	Chain
73163	Small Block Chevrolet	Stock	76163
73168	Big Block Chevrolet	Stock	76168
73164	Ford 255-302-351W (Late 1973-88)	Stock	76163



PUSHRODS, DRIVE & OIL PUMPS

OIL PUMPS & MORE

OIL PUMPS

- ✓ Quality oil pumps meticulously machined
- ✓ Precision formed gears to assure proper oil pressure

Part No.	Quantity	Description	Volume	Cover Type	Inlet Size	Pick-up
71087	1	Small Block Chevy	25% Add'l	4 bolt	5/8"	Use Stock
71089	1	Small Block Chevy	25% Add'l	5 bolt	3/4"	72090 Included
71091	1	Big Block Chevy	22% Add'l	5 bolt	3/4"	Use Stock

Replacement pick-ups for pump 71089 are sold separately as P/N 72090.



OIL PUMP STUD & "DRIVE" SHAFTS

- ✓ An oil pump stud is the professional way to secure your oil pump to the rear main cap
- ✓ Precision manufactured pump drive shafts

Part No.	Quantity	Description	Application
42339	1	Oil pump stud	Fits all Chevys
42328	1	Oil pump drive shaft	SB Chevy and 90° V-6
42329	1	Oil pump drive shaft	BB Chevy



CHEVROLET LIGHTWEIGHT FUEL PUMP PUSHROD

A stock Chevrolet fuel pump can "float" at high engine speeds just like a heavy intake valve. A lightweight fuel pump pushrod helps a mechanical fuel pump do its job when the tach climbs past 6000 rpm. Made from 4130 chrome moly steel tubing.

Part No.	Quantity	Description
42236	1	Fits Small and Big Block Chevrolet



OIL RESTRICTOR KIT

- ✓ Carefully machined for exact fit
- ✓ The .060" orifice precisely meters oil flow to the engine
- ✓ Spare "O" rings included

Part No.	Quantity	Material	Description
42237-2	Set of 2	Aluminum	Fits non Bow Tie Chevys. Hex Head
42238-2	Set of 2	Stainless	Fits all Chevys including Bow Tie and Rocket Block. Recessed Allen head



LIFTER VALLEY BREATHER TUBES

- ✓ Eliminates excessive oil drain back while maintaining proper ventilation
- ✓ 1/4" NPT Thread Size

Part No.	Quantity	Description
42235-8	8 pcs.	Fits all Chevrolets



PUSHRODS, DRIVE & OIL PUMPS